

# Blue Ribbon Task Force Delta Vision Discussion

Advisory Water Commission

---

C. Mel Lytle, Ph.D.

Water Resource Coordinator

January 16, 2008

# Recent Delta Events (2003-07)

---

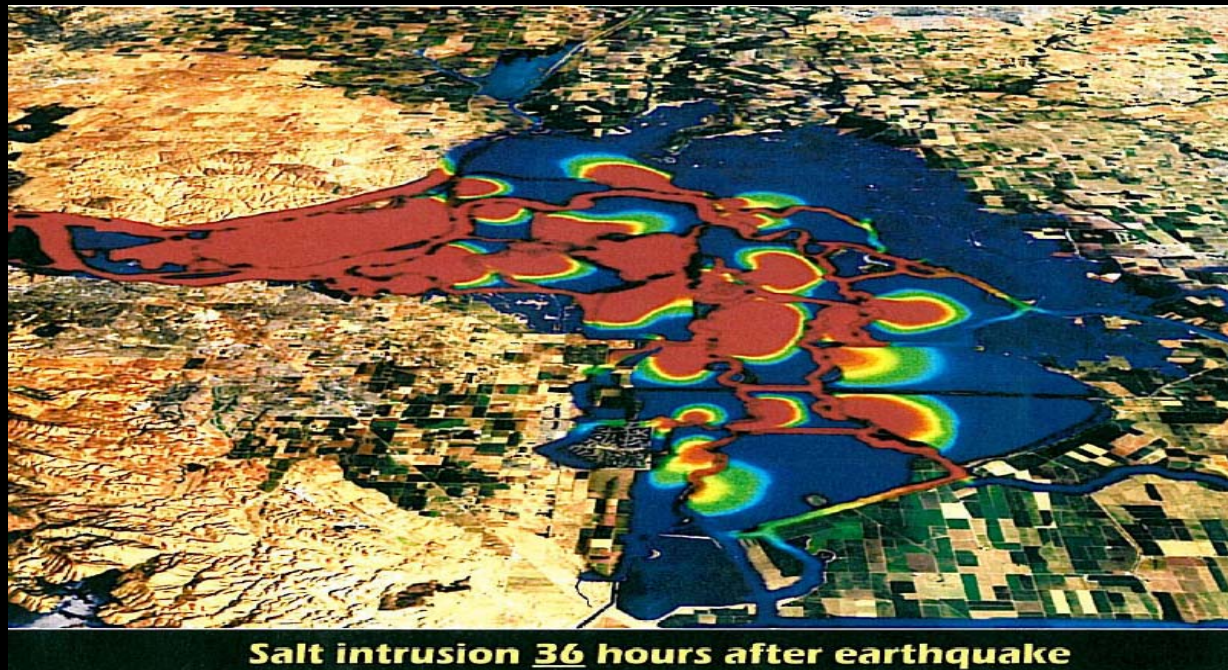
- -- Napa Proposition
- -- UOP negotiations collapse
- -- Jones Tract levee failure
- -- CALFED failure
- -- Pelagic fish decline
- -- Hurricane Katrina
- -- State & Federal Rulings
- -- DRMS: Delta is broken
- -- Governor's Executive Order S-17-06



# Delta Disaster?

---

- Two in three chance of a major earthquake within the next few years.” Dr. Jeff Mount, UC Davis

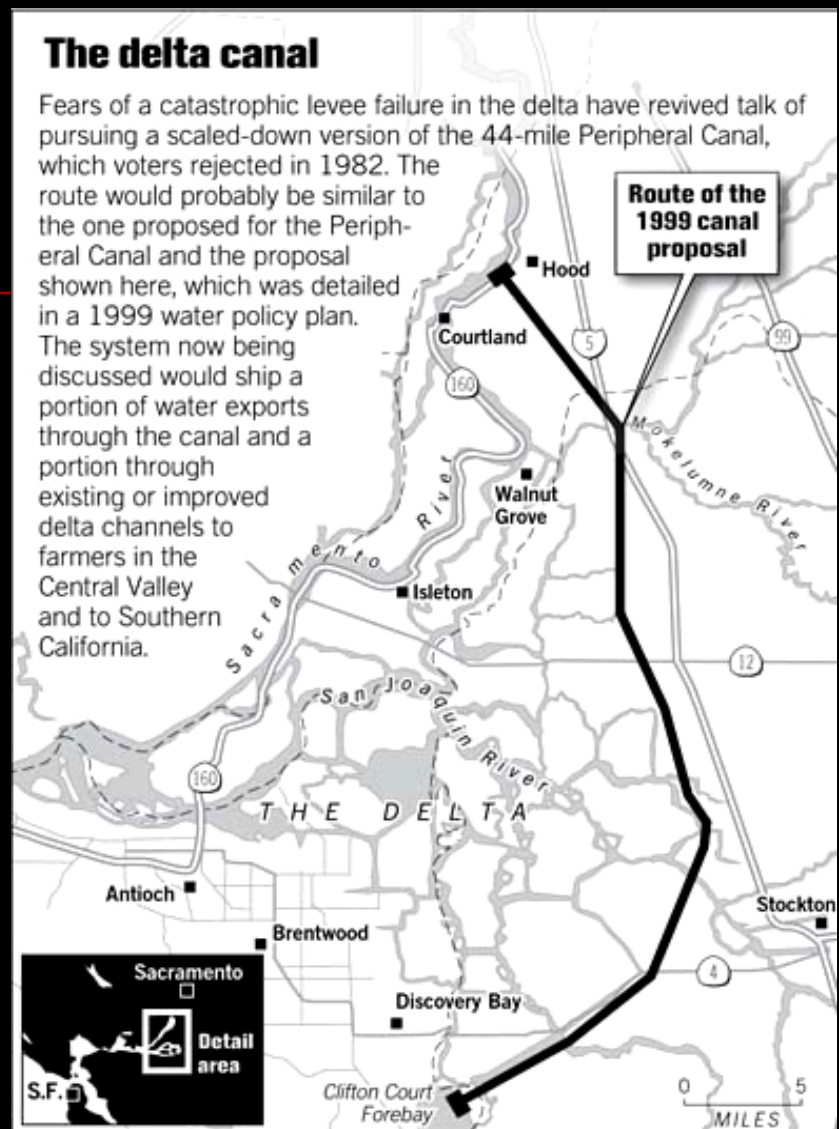


# 1982 “Revisited”



## The delta canal

Fears of a catastrophic levee failure in the delta have revived talk of pursuing a scaled-down version of the 44-mile Peripheral Canal, which voters rejected in 1982. The route would probably be similar to the one proposed for the Peripheral Canal and the proposal shown here, which was detailed in a 1999 water policy plan. The system now being discussed would ship a portion of water exports through the canal and a portion through existing or improved delta channels to farmers in the Central Valley and to Southern California.



Sources: ESRI, USGS, Geographic Data Technology, Callfed

Chronicle Graphic

# Historic Position of County

---

- 1982 - Resolution 791 Opposed the authorization, funding, and construction of the proposed Peripheral Canal project (SB 200).
- 1991 - Position not changed in communications with Contra Costa County
- 1998 – CALFED Draft EIR/EIS Hearing: “The historic opposition of the County to the Peripheral Canal is strongly re-asserted. The Board is unalterably opposed to any isolated facility transporting water from the Sacramento River directly to the State and Federal pumps”, said George L. Barber, Supervisor San Joaquin County
- 2007 – Resolution 534 Opposed the Peripheral Canal or other Isolated Facility in the Delta. “Southern California’s thirst shouldn’t be quenched at our expense”, said Steve Gutierrez, Supervisor

# Senator Mike Machado

---

- They're proposing something that many people think would be disastrous for the Delta," State Sen. Mike Machado



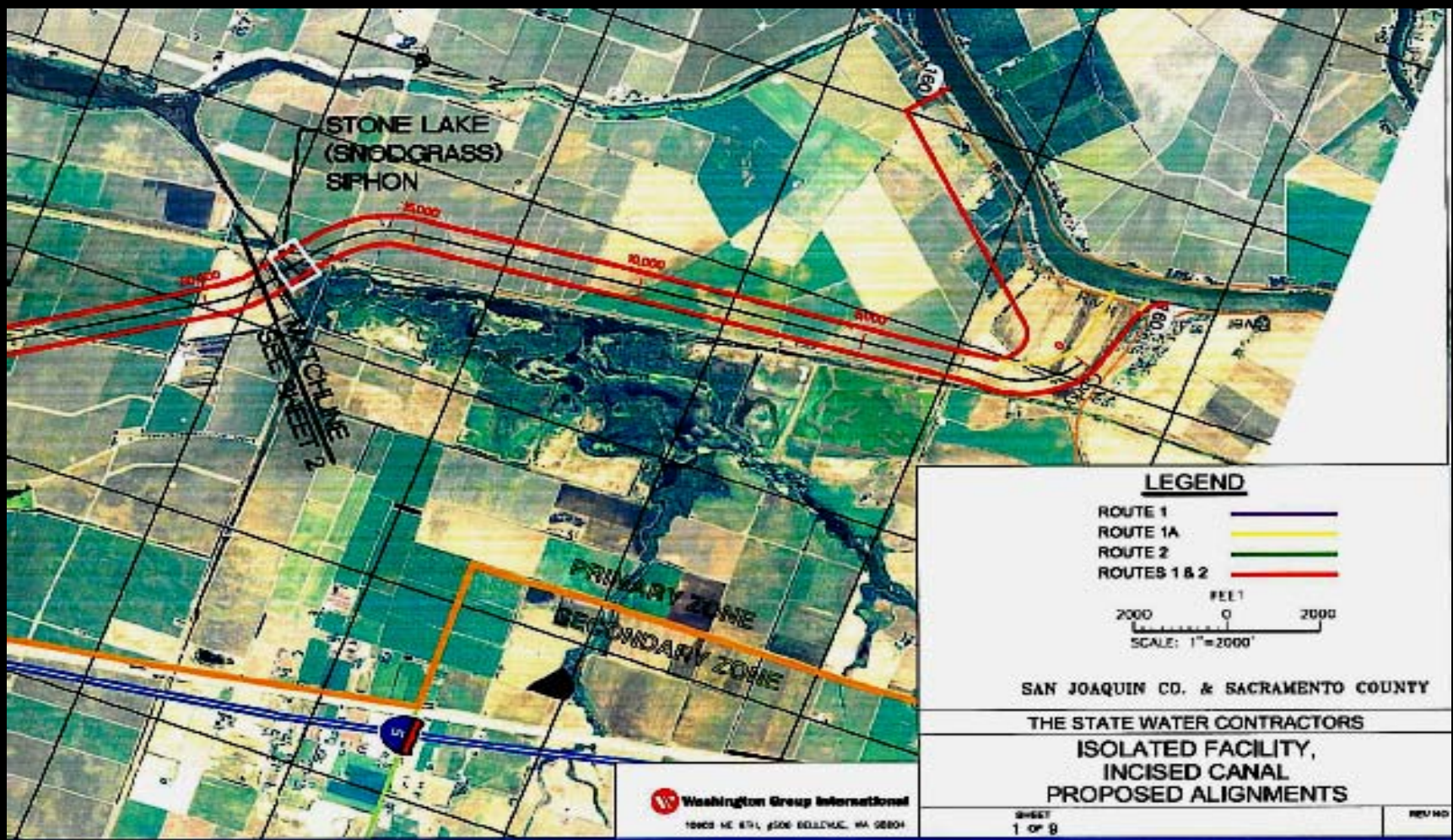
# Metropolitan Water District



- Met was a main supporter original Peripheral Canal
- Met Board took action to support a Dual Conveyance facility concept
- Recently, Jeff Kightlinger, Met General Manager said, “conveyance is the primary concern. Everything else follows after...improved water quality is chief priority...”

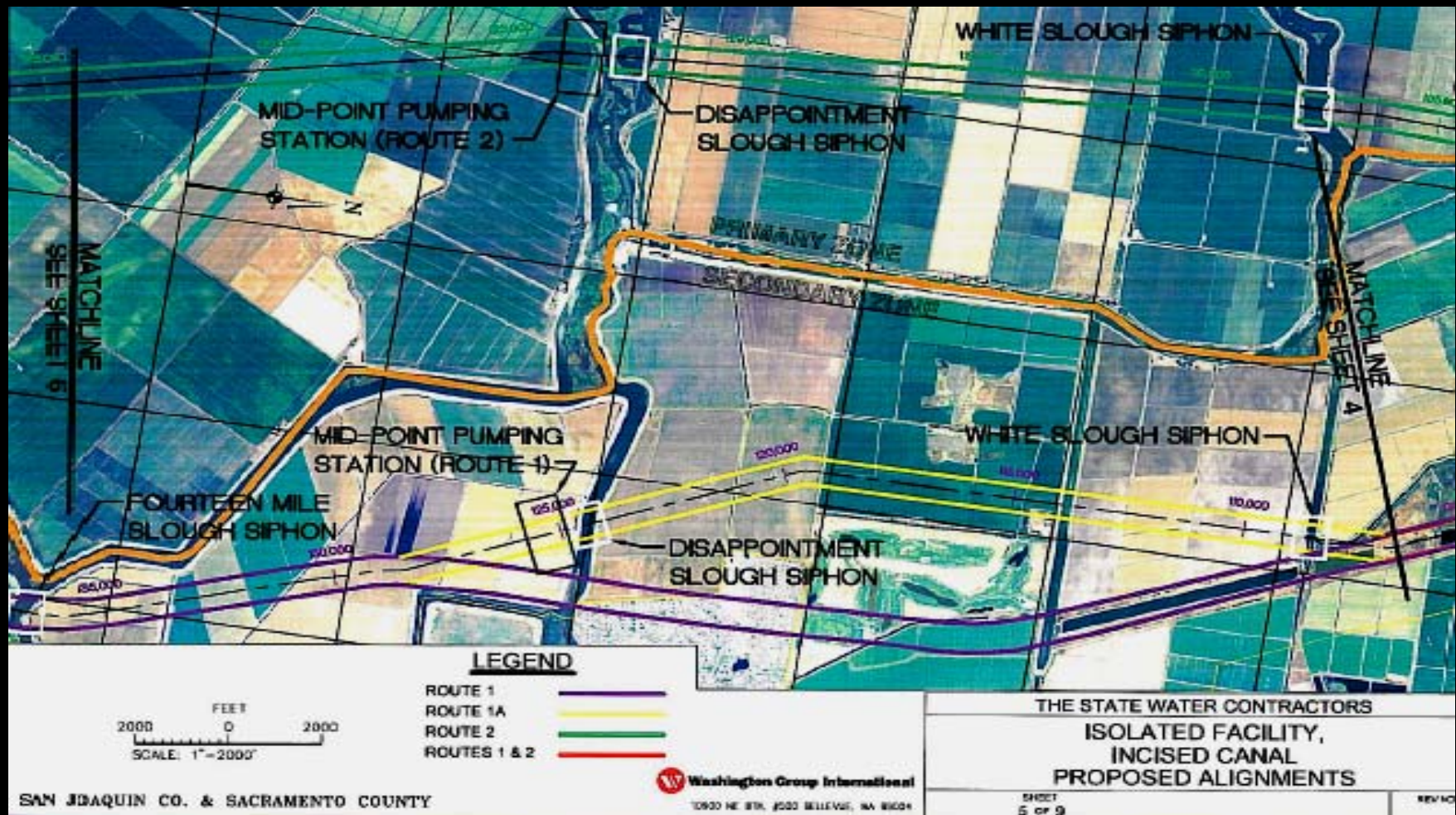


# Example of Proposed Alignment 1

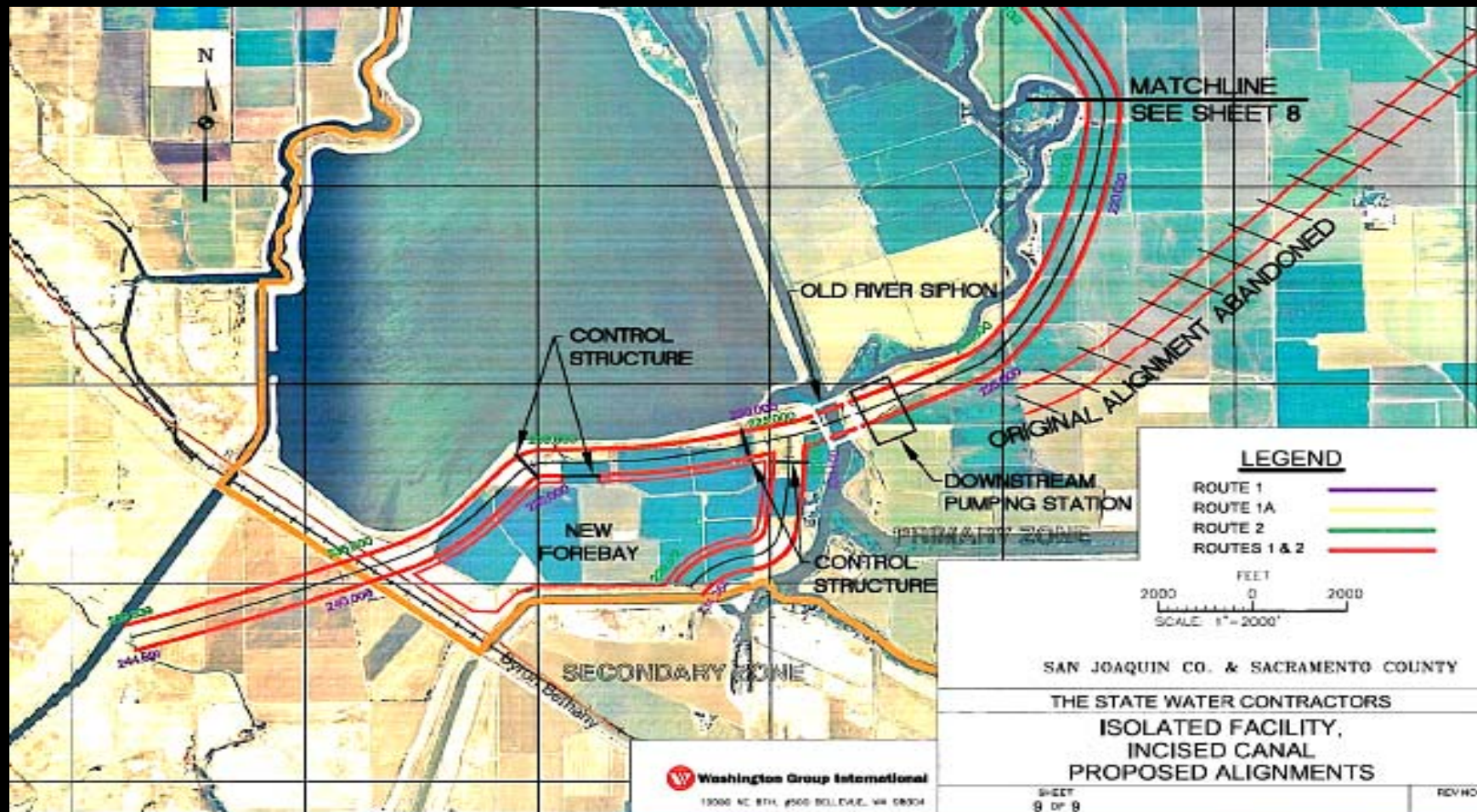




# Example of Proposed Alignment 2

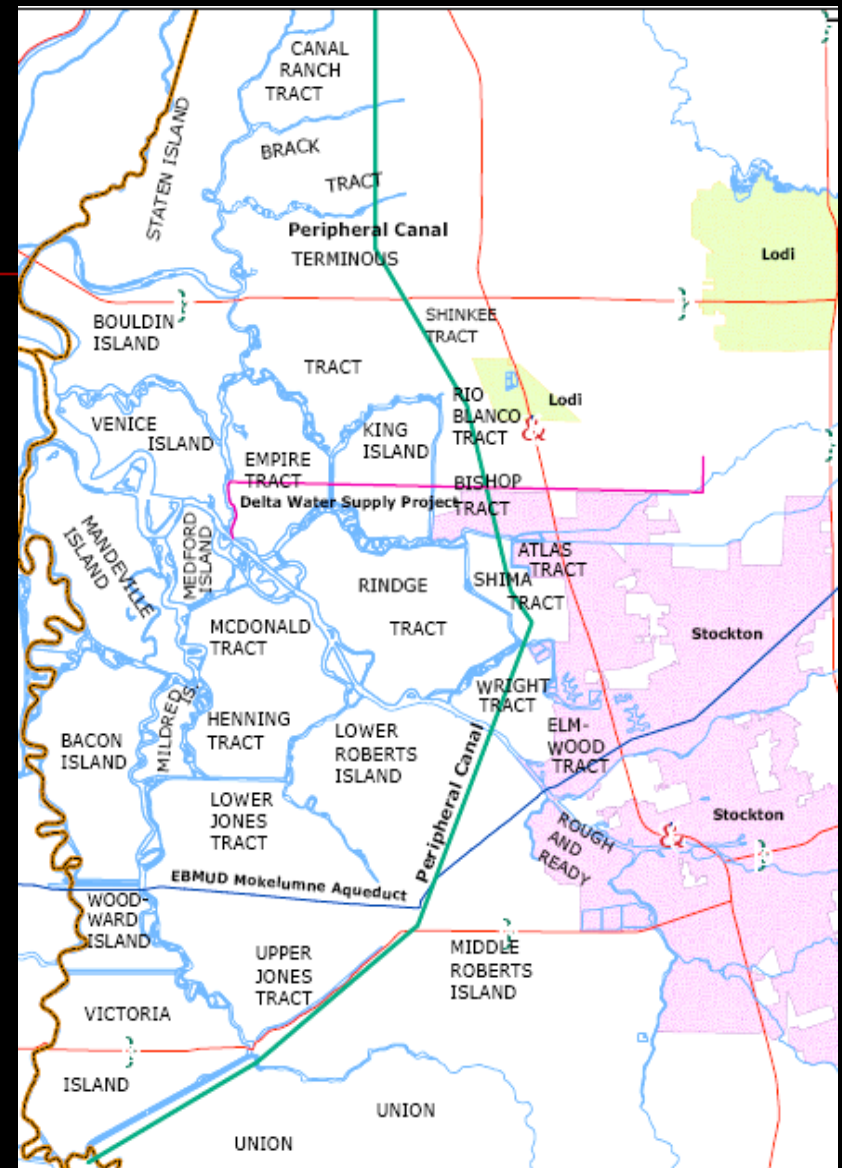


# Example of Proposed Alignment 3



# Local Impacts

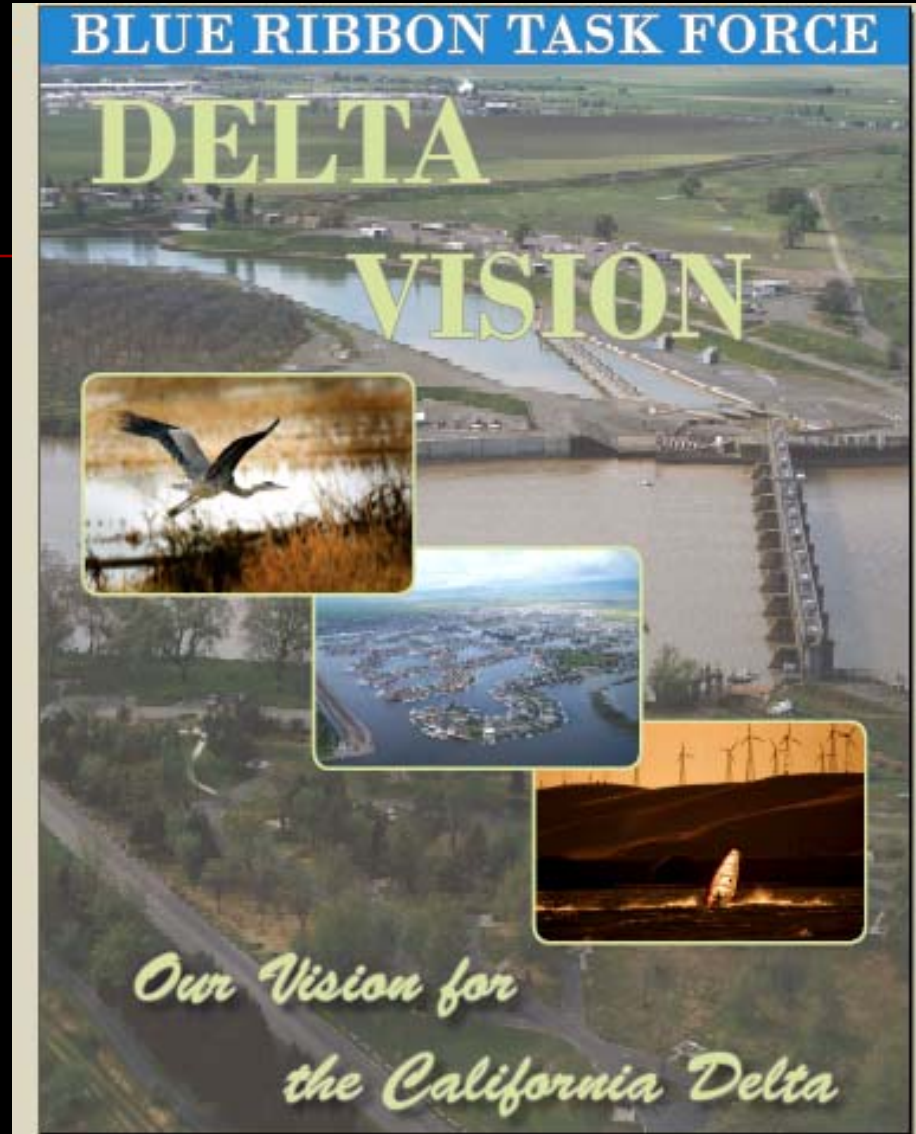
- Loss of Water Quantity & Quality
- Loss of Agriculture
- Loss Business & Economy
- Degraded Infrastructure
- Loss of Recreation
- Poorer Fisheries & Habitat
- Lack of Flood/Seepage Control
- Loss of Rights of Way
- Less Water Conservation



# Delta Visions



**December 2007**



# Visions Organization

---

- State of California – Governor
- Delta Vision Committee
- Delta Vision Blue Ribbon Task Force
  - Phil Isenberg
- Stakeholder Coordination Group
  - Tom Flinn & Tom Zuckerman
- Science Advisors
  - Jeff Mount & Mike Healey

# Delta Visions – Exe. Order S-17-06

---

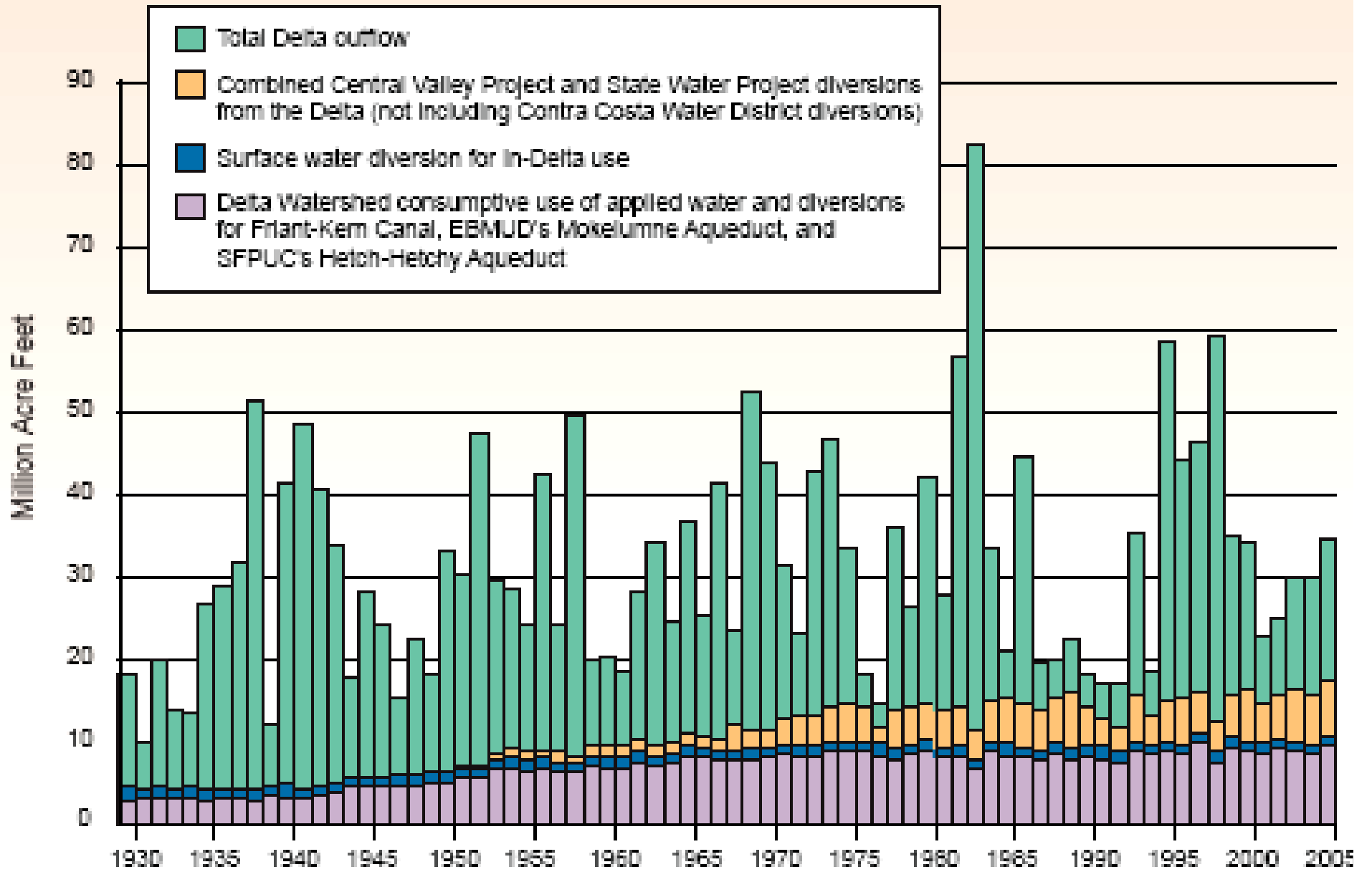
- To develop a **durable vision** for sustainable management of the Delta
- With the goal of “...managing the Delta over the long term to **restore and maintain identified functions and values** that are determined to be important to the environmental quality of the Delta and the economic and social well being of the State.”

# Delta Vision Recommendations:

---

- 1. Delta **ecosystem and a reliable water supply** for California are the primary, co-equal goals
- 2. The **California Delta** is a unique and valued area, **warranting recognition** and special legal status from the State.
- 3. The Delta ecosystem must function as an integral part of a healthy estuary.

# from the Delta, plus Outflows



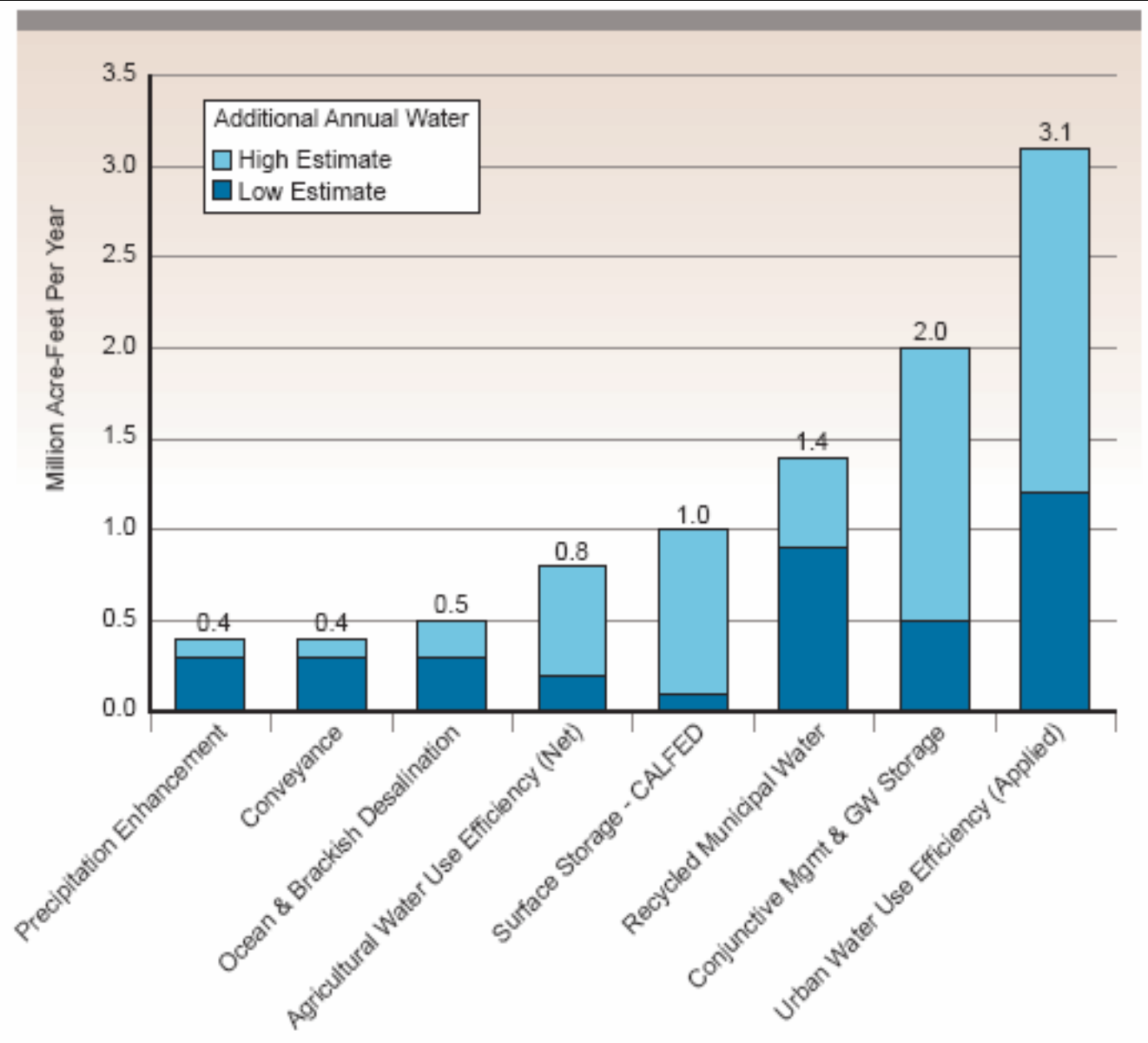


# Recommendations Cont.

---

- 4. California's water supply is limited and must be managed with **significantly more efficiency** to be adequate for its future population, growing economy and vital environment.
- 5. The foundation for policy making about California water resources must be the longstanding constitutional principles of **"reasonable use"** and **"public trust,"** these principles are particularly important and applicable to the Delta.

# Statewide Strategies to Reduce Demand







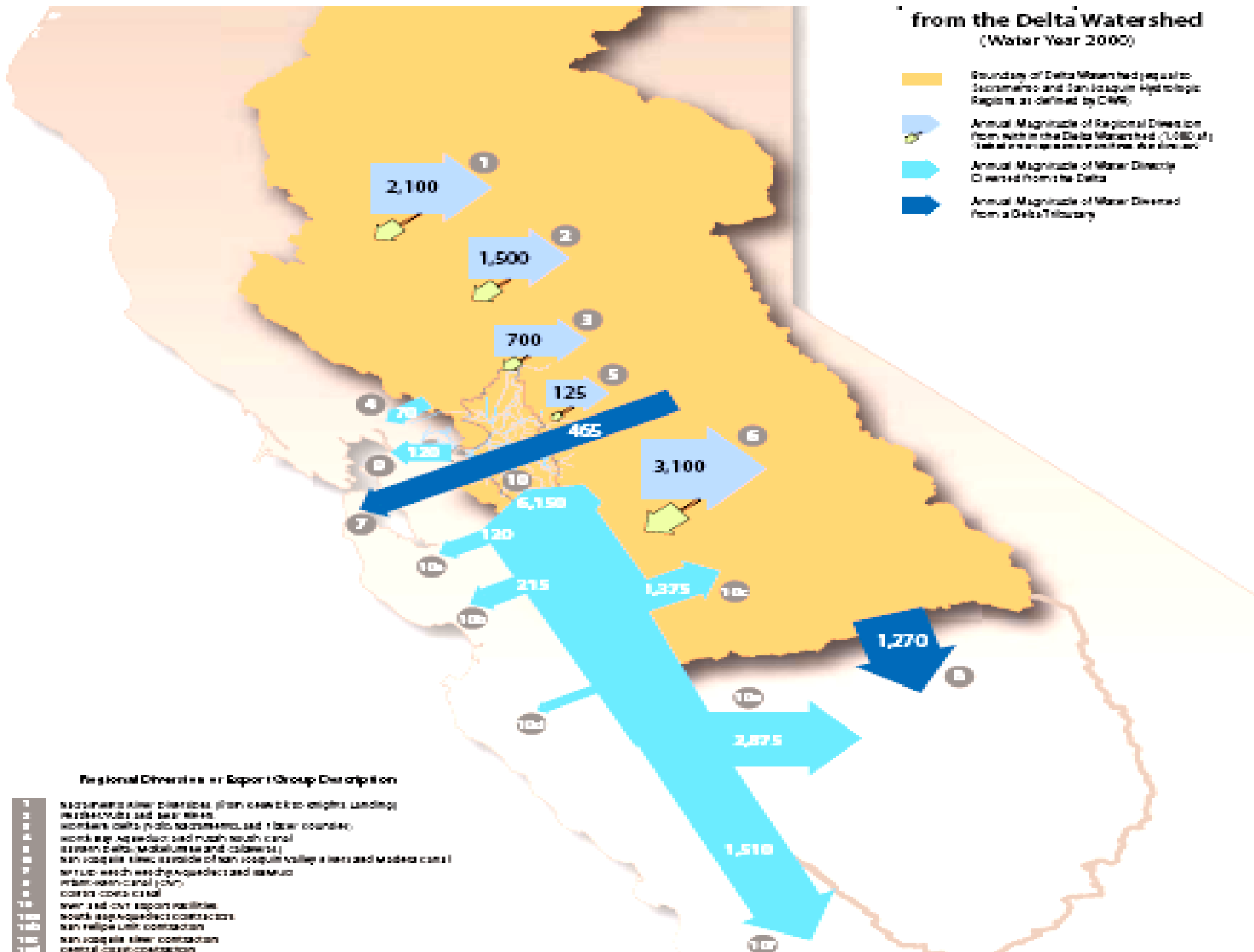
# Recommendations Cont.

---

- 6. The goals of **conservation, efficiency and sustainable use** must drive California water policies.
- 7. A revitalized Delta ecosystem will require **reduced diversions, or changes in patterns and timing of those diversions, upstream, within the Delta and exported from the Delta** at critical times.
- 8. **New facilities for conveyance and storage, and better linkage between the two**, are needed to better manage California's water resources the estuary and exports.

## from the Delta Watershed (Water Year 2000)

-  Boundary of Delta Watershed (equal to Sacramento and San Joaquin Hydrologic Regions as defined by CWR)
-  Annual Magnitude of Regional Diversion from within the Delta Watershed (1000 cfs) (total in aggregate is 10,000 cfs)
-  Annual Magnitude of Water Directly Diverted from the Delta
-  Annual Magnitude of Water Diverted from a Delta Tributary

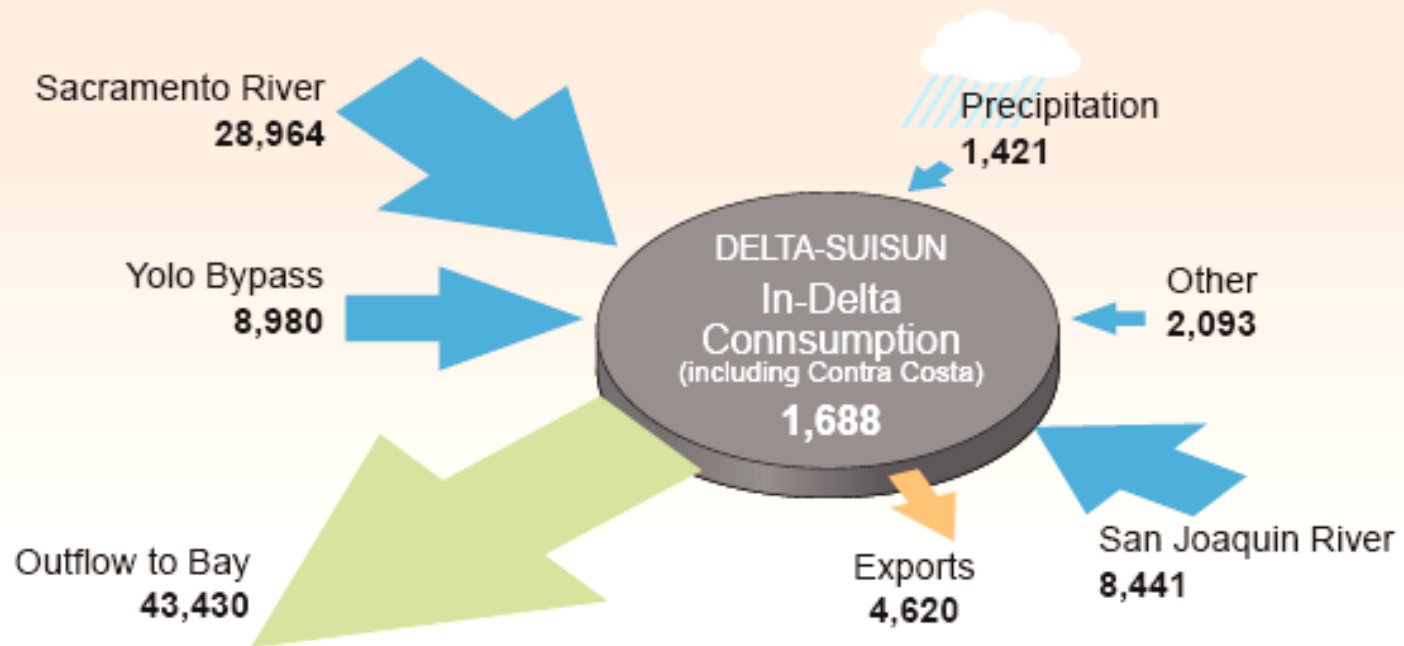


10000  
5000  
0

# Delta Water Balance by Year Type

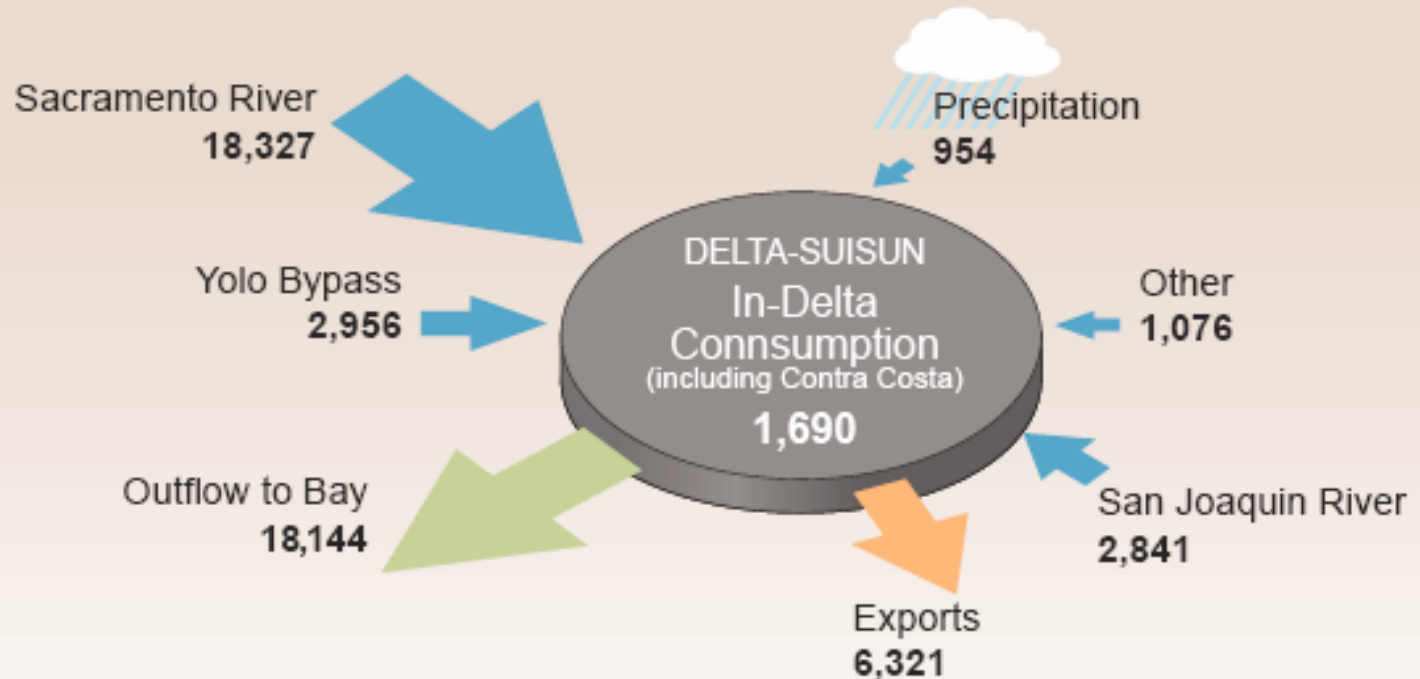
Figure 9. Delta Water Balance by Water Year Type

1998 (Wet)



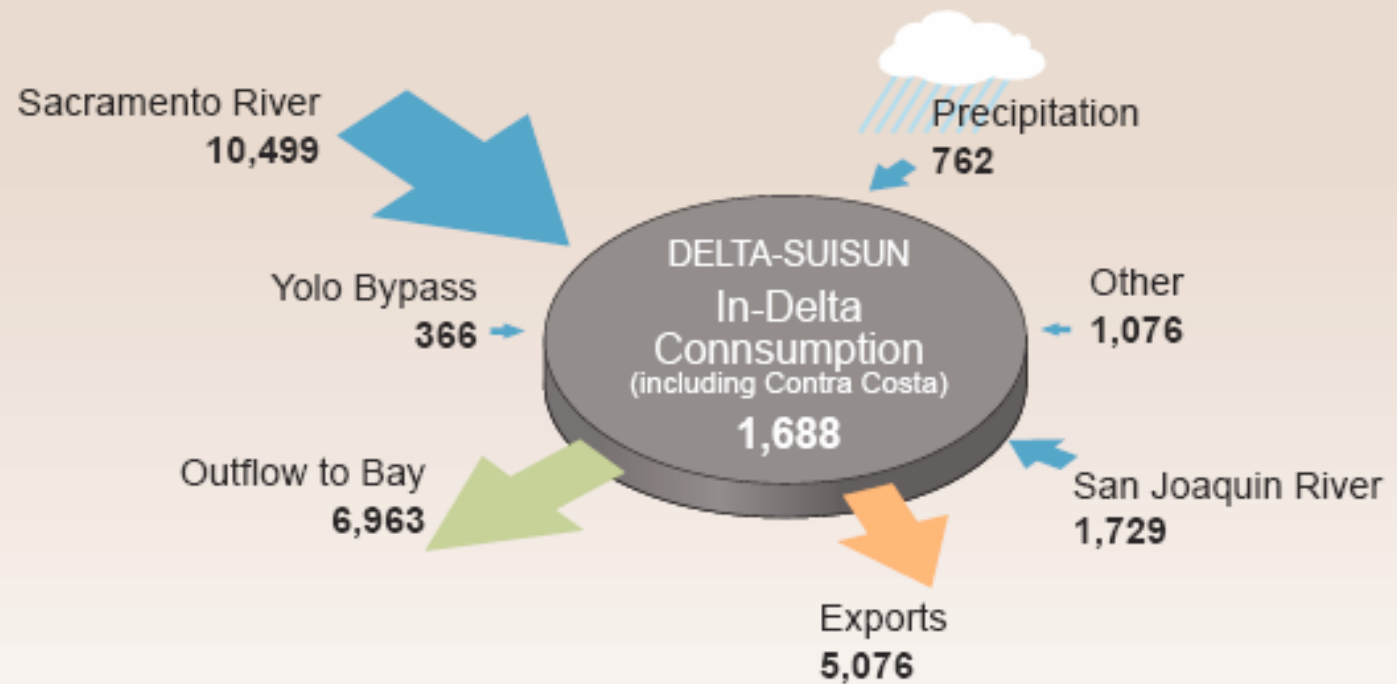
# Delta Water Balance - Average

2000 (Average)



# Delta Water Balance - Dry

2001 (Dry)



Source: Status and Trends of Delta-Suisun Services, DWR 2007

# Recommendations Cont.

---

- 9. Major **investments** in the **California Delta** and the **statewide water management system** must be consistent with, and integrate specific policies in this vision. In particular, these strategic investments must **strengthen selected levees, improve floodplain management and improve water circulation and quality.**
- 10. The **current boundaries and governance system of the Delta** must be changed. It is essential to have an independent body with authority to achieve the **coequal goals of ecosystem revitalization and adequate water supply** for California while also recognizing the importance of the Delta as a unique and valued area. This body must have secure funding and the ability to approve spending, planning and water export levels.



# Recommendations Cont.

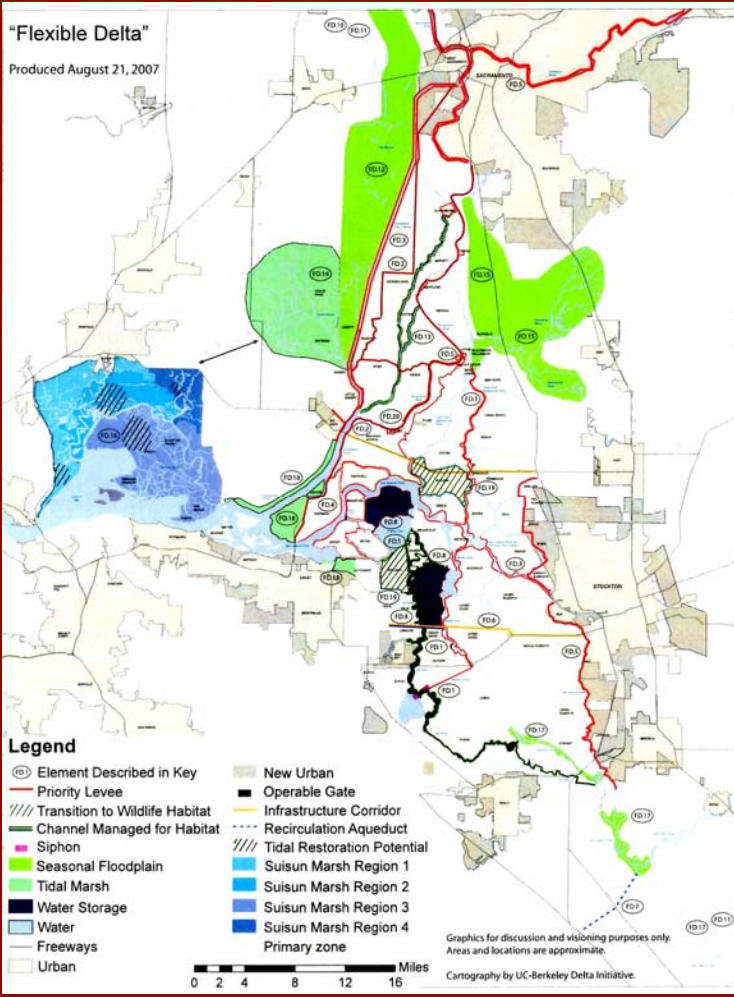
---

- 11. Discouraging inappropriate urbanization of the Delta is critical both to preserve the Delta's unique character and to ensure adequate public safety.
- 12. Institutions and policies for the Delta should be designed for resiliency and adaptation.

# Visions Report – Flexible, Resilient

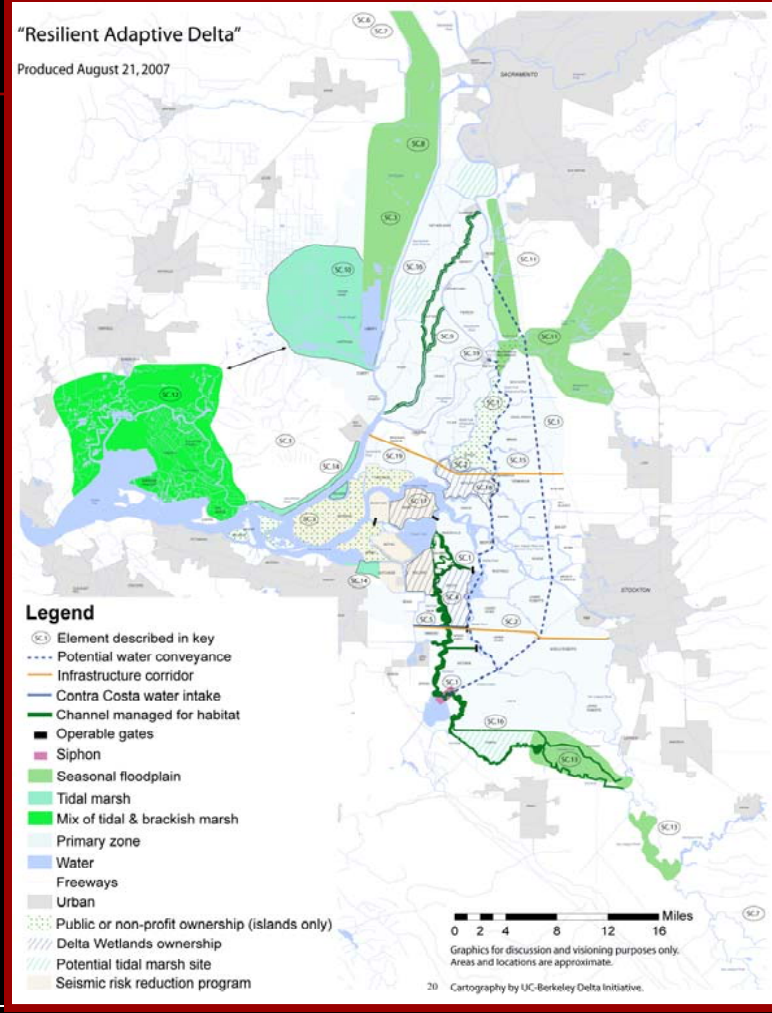
## "Flexible Delta"

Produced August 21, 2007



## "Resilient Adaptive Delta"

Produced August 21, 2007



# Near-Term Actions

---

## ■ Seven Near-Term Actions:

- State acquiring title & easements of floodplains
- Discourage residential building in flood prone areas
- Inappropriate land development
- Set appropriate standards for levees
- Emergency management actions
- Incorporate sea level rise
- Ecosystem revitalization
- Conveyance and groundwater surface water storage

# Supervisors Concern

---

- Development of County Position:
  - Water Resources
  - Flood Control
  - Land Use
  - Local Governance
- Draft Resolution & Adoption

# Discussion

---



# Epilog

---

*“As long as the Sierra’s stand, snow falls and rivers run, the Sacramento-San Joaquin Delta will be sustainable. Our overuse, abuse and neglect of this vital resource is not.” - C.M. Lytle*



---

$$PC = \{N_0^\eta - (SE^\phi_\pi)ns^\varepsilon\}$$

# Resolution Opposing the Canal

---

- NOW THEREFORE, BE IT RESOLVED that the San Joaquin County Board of Supervisors opposes the development of a Peripheral Canal or any other isolated water conveyance facility in the Delta; and hereby urges the following:
- 1. That State water interests pursue regional solutions and limit exports from the Delta to water which is truly surplus to all present and future beneficial needs including environmental needs of the Delta and other areas of origin.
- 2. That the Delta be maintained as a common pool of good quality water for local and export water use.
- 3. That new water supplies in the State of California be developed through greater conservation, recycling, conjunctive use of ground and surface water, desalinization of brackish and ocean waters, local water storage, water reclamation and improved management of flood waters for the recharge of overdrafted groundwater basins.



# Resolution Conti-

---

- 4. That local and regional water resource management activities be supported to develop and utilize local regulatory storage and other projects for improved conjunctive use, recharge capability and groundwater storage.
- 5. That Delta levees strengthened and gates and other facilities installed at strategic locations to improve Delta sustainability and facilitate recovery from flood, seismic and other emergencies.
- 6. That emergency response plan be developed, financed and implemented to provide improved State and local capability to respond to flood, seismic and other emergencies in the Delta.